

## **2023 PRE BASIC GRADING - EVENT DETAILS & PROCEDURES**

Mary McBryde – BAPSH Ltd Registrar

This year, 2023, we are having our 2nd Grading under the more stringent Pass/Fail criteria Regulations approved by ANCCE, Spain in late 2021. The UK Basic Grading uses **ONE** Venue in the Centre of the UK with **TWO or THREE Days** of Grading Evaluations at one location since 2017. The format is a great success and late August has proven to be a popular time period, allowing breeders and owners to spend all summer preparing their horses for this important event in their horse's lives. This year the dates are Saturday 19<sup>th</sup> August for Stallions, and Mares in mixed loads with Stallions, & Sunday 20<sup>th</sup> for Mares, some Mares may be seen on Monday 21<sup>st</sup> early morning if numbers require. The venue is the Unicorn Trust Equestrian Centre, Stow-on-the-Wold, Warwickshire, GL54 1JZ, which has a large Indoor arena, 2 outdoor arenas, stabling, refreshments, some onsite accommodation for humans plus plenty of local B&Bs, hotels, restaurants, cafes, Tesco, M&S, and a petrol station in the town.



The 26 large rubber-matted permanent stables may be booked via BAPSH Ltd for horses travelling long distances to the Grading, or needing to stay overnight for an early morning Grading slot. Owners with several horses may also wish to book Day stables.



There are 2 Extra large corner stables in a separate yard for mares with foals at foot. Stable Booking forms will be on our website or from the BAPSH Registrar.

Unicorn Trust Kitchen provides excellent Breakfasts and Lunches for those at the Grading but their Kitchen will only be opened if there is a minimum of 15 people wanting a breakfast or a lunch, so meals must be pre-booked with BAPSH and if numbers are insufficient the booking fee will be refunded; Lunch Forms will be available at the start of July once we have the approximate number of people attending the Grading..

The Basic Grading evaluation is done by an ANCCE-LGPRE trained & employed equine veterinary surgeon (referred to as the Delegate). Most of these vets spend every day working with PRE breeders in Spain, inscribing foals or evaluating horses for Basic Grading. The Delegate is a different person each year; we won't know who is coming until a few days before the event starts.

The new Basic Grading takes at least 30 minutes to assess each horse which is roughly 2 horses or less per hour. One Venue enables us to Grade around TWENTY horses per day, so a **MAXIMUM of about FORTY** Horses over the weekend.

### **CURRENT REQUIREMENTS FOR THE BASIC GRADING**

1. Horses must have **reached their 3rd Birthday** or older, so all horses born on/before **19/08/2020** or earlier are eligible.
- 2a. The horse must be owned by a person who has an **ANCCE-LGPRE BREEDER CODE**. This ownership must be correct on the ANCCE-LGPRE studbook (on [www.lgancce.com](http://www.lgancce.com)) and must also be correctly registered with BAPSH Ltd and the DEFRA Central Equine Database.
- 2b. If you need to change your horse's ANCCE-LGPRE ownership to your Breeder Code you **MUST** allow 4 weeks for this Service request to be completed **BEFORE** you can book your Grading slot - NEW LGPRE Rules.
3. There are a number of conformation faults and colour/pigmentation faults which will lead to automatic Failure of the Basic Grading. These are known as **DISQUALIFYING FAULTS** and are detailed in the accompanying document titled **2023 PRE Horses BASIC GRADING – PASS or FAIL CRITERIA & FAULTS LIST**, along with the **VERY SERIOUS FAULTS**, and the **SERIOUS FAULTS**. Please read through this important document on the **PASS or FAIL GRADING CRITERIA** and then have a good look at your horse and try to make an objective assessment of him/her regarding the presence/absence of any Disqualifying Faults before you apply to get your horse Graded. If you need any help or advice regarding Disqualifying Faults please email the BAPSH Registrar with your question/s.



# **PREPARING YOUR HORSE FOR GRADING**

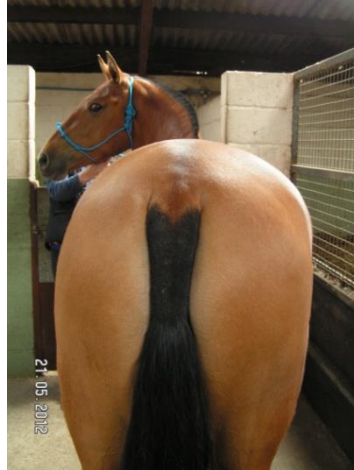
## **PRESENTATION**

**General** - Your horse should be clean **BUT NOT COVERED IN SHOWSHEEN or similar product!** It is difficult to measure a very slippery horse !!

**Manes and Tails** - Stallions and riding mares should have their manes and tails worn loose as shown by the young stallion on the left wearing the correct Spanish in-hand showing headgear called a 'Serreta', and the riding mare on the right who is wearing a sturdy but elegant Headcollar.



Potential Brood mares should have their manes and tails clipped in the traditional manner as shown in these three examples below of beautifully prepared traditionally clipped mares who have attended UK Basic Gradings over the past few years.



**Hairy Fetlocks & Heels** - should be neatly Trimmed. Long tufty hair sticking out of the ears should be trimmed short level with the ear edge, and any long winter hairs left on the jaw line should be removed .

Feeler whiskers do NOT need to be trimmed off - they are important to a horse's sensory input.

**Hooves** should be well shaped, and may be grown a little longer and deeper if there might be a height issue for your horse. You may also present a horse fully shod or shod in front only. Extra thick shoes are not acceptable and will be deducted from the wither measurement. It is preferable NOT to oil your horse's feet.

## **Horse head-gear**

Mares should be presented wearing a suitable strong **Headcollar /Halter with a fixed ring** attachment for the lead rope that gives good control or a Spanish Serreta as demonstrated by the two mares in the left and right photos above. Do NOT use any form of rope halter such as the one shown in the middle photo above.

Stallions should be presented in a Spanish Serreta with a long leadline. **Do NOT use a show halter with a chain under the jaw** – these destroy the correct outline of a PRE and will have a Negative effect on your horse's Grading.

You will need a 20ft Lunge line to clip to your horse's headgear for the Movement Section plus a lunge whip or similar.

**Handlers** - Please wear smart but sensible clothes yourself – you are representing the UK breeders/owners of PREs to our visiting Spanish Delegate. BAPSH recommends that both male and female handlers wear smart but comfortable trousers, and jackets that do NOT flap about in the wind or when you are moving. Footwear should be sturdy and easy to run in.

## TRAINING YOUR HORSE

It is IMPORTANT to give your Horse every advantage for the Grading by presenting your horse in good condition, nicely muscled with a smooth covering of fat to give the typical firmly rounded outline that we love in the PRE. Good manners and good behaviour are also very important - any horse behaving badly/dangerously can be dismissed un-graded by the Delegate. There are 2 sections to train your horse for.

### a) MOVEMENT SECTION

The Movement Section for the Grading process comprises walk, trot, and canter. It is VERY important to spend plenty of time practising with your horse in order to do this section as well as possible – you need to get **5 or more points out of 9 for each pace (less than this will count as a serious fault)**

The Grading Delegate will be looking for the following:-

- 1.Walk in a straight line showing a four-beat walk that is active and tracks up well, **PREFERABLY OVERTRACKING**
- 2.Trot in a straight line showing good Elevation, Flexion, Extension, and Drive, and tracking up correctly, Overtracking is better. Some Delegates permit the horse to be trotted on a circle so it is advisable to practise both.
- 3.Canter on a lunge line in a circle – 3 or 4 well balanced circuits, ideally performed in a calm, **WELL-BALANCED**, but energetic manner, **rounded and uphill**. Train your horse to go on as large a circle as possible – this will improve his/her balance and reduce the chance of the horse scrabbling around in an off-balance manner.

IF your horse collects 2 or 3 unnecessary 'Serious Faults' on its Movement due to laziness or lack of training, and then also gets 1 or 2 'Serious Faults' in Conformation (which cannot be avoided due to the horse's natural conformation) it will **FAIL** unnecessarily - all due to lack of training/presentation.

### b) MEASUREMENT SECTION –

**'Grading Step by Step Photographic Record'** is available to download from [www.bapsh.co.uk](http://www.bapsh.co.uk) for owners intending to Grade their horses. The copyright to this document belongs to BAPSH Ltd and it is not for general or commercial reproduction.

Your horse must be trained to stand quietly and calmly for around 30minutes whilst this section is completed.

The measurements will be made using an expanding metal measuring stick with one or two sliding callipers attached which project from the stick at right-angles.

This can be a bit unnerving for a horse if you haven't practised measuring it with a stick, so it is very important that you spend time accustoming your horse to having a solid stick placed all around his/her body, head, and neck. I suggest that you start your training with a short piece of lightweight wood, eg. dowelling, and progress to longer pieces as your horse's confidence grows.

The ANCCE-LGPRES are quite clear about the requirement that the horse being assessed must stand quietly and calmly whilst being measured. They state that any horse that cannot be measured will be dismissed and have to come back another time with a brand new application and full fee.

Here are the measurements that will be made and a description of where they are taken to and from on the horse

**Height at the withers:** Measured from the highest point of the withers vertically down to the ground where the horse is standing.

- **Height at point of croup:** Measured from the highest point at the croup vertically down to the ground where the horse is standing.
- **Scapular-ischial length:** Horizontal distance from the point of shoulder to the point of buttocks (ischial prominence).
- **Length of head:** Length of the straight segment between the highest point of the poll and the edge of the upper lip.
- **Width of head:** Length of the straight segment between the most laterally extended points of the zygomatic arches. This may require the stick to be across the head with the callipers measuring the outside edges of the eye orbit bones, or the vet may use the measuring tape.
- **Length of neck:** Length of the straight segment between the centre of the scapular spine (shoulder-blade) and the base of the ear.
- **Width of chest:** Distance across the front of the breast between the outside of the points of shoulder.
- **Length of shoulder:** Straight distance along the shoulderblade from the highest point of the withers to the point of shoulder.
- **Length of forearm:** Vertical straight distance between the line, parallel to the ground, traced from the elbow down to the middle of the carpal joint (at accessory bone level).
- **Dorsal-sternum diameter:** Vertical distance between the highest point of the withers and the underside of the sternum along the plane immediately behind the elbow.
- **Bi-costal diameter:** Horizontal distance between the widest points of the rib arches along the plane immediately behind the elbow. We don't know if this measurement is taken from above or below the horse so advise practising both.
- **Length of back:** Horizontal distance between the low point of the withers and the end of the thoracic region.
- **Length of loin:** Horizontal Distance between the end of the thoracic region and the point of croup.
- **Width of croup:** Horizontal distance between the most lateral and caudal points of the tuber coxae. (the widest distance between the outer edges of the hipbones)



- **Length of croup:** Horizontal distance between the most cranial point of the tuber coxae and the most caudal of the tuber ischii. (ie. From the point of the hipbone nearest the head to the bit of the ischial prominence farthest away)
- **Point of hip-stifle distance:** Distance between the dorsal point of the tuber coxae (top of the point of hip) and the stifle.
- **Buttock-stifle distance:** Distance between the ventral point of the tuber ischii (underside of the point of buttock) and the stifle
- **Length of gaskin:** Distance between the stifle and the point of hock.
- **Length of buttock:** Distance that links the central point of the tuber ischii (point of buttock) and the start of the tendon (end of the muscle).
- **Thoracic perimeter:** The reference points are the lowest point of the withers and the sternum along the plane immediately behind the elbow. ie circumference of the horse around girth area – this is measured with a steel or cloth tape measure.
- **Perimeter of knee:** Maximum perimeter of the transversal plane of the carpal bone.
- **Perimeter of anterior cannon bone:** Perimeter of the upper third of the metacarpal region.
- **Angle of shoulder:** Angle formed by the line of the length of the shoulder-blade spine with the horizontal.
- **Angle of croup:** Angle formed by the line of the length of the croup with the horizontal.
- **Proportionality index:** Quotient between the height at the withers and the body length (Scapular-ischial length) multiplied by 100. This is a mathematical calculation taken from the previous measurements.

### **TO APPLY - COMPLETE BAPSH 2023 PRE Grading Booking Form & ANCCE International Application for Service 206 & send with Fee to BAPSH Ltd**

The Forms are available at [www.bapsh.co.uk](http://www.bapsh.co.uk) or from [bapshregistrar@btinternet.com](mailto:bapshregistrar@btinternet.com).

Send BOTH Forms with **FULL Fee of £245.00** (Cheques paid to BAPSH Ltd) ASAP to **BAPSH Registrar – Holly Trees Farm, Chesterblade Road, Stoney Stratton, Shepton Mallet, Somerset, BA4 4EQ.**

OR preferably pay by BANK TRANSFER - see application form for Bank Details

NOTE: ANCCE Full Members benefit from a **£10.00** discount per horse on quoted Grading Fees.

**NOTE: If you are presenting your horse for a 2<sup>nd</sup> time due to a failure the first time, please send us your application EARLY if possible. This will enable BAPSH to notify ANCCE-LGPRE that we CANNOT have the 2022 Delegate for 2023**

**SEND FORMS & FEES TO THE REGISTRAR BY 10th JUNE - SOONER IS BETTER AS THERE IS A MAXIMUM NUMBER OF HORSES THAT CAN ATTEND THIS BASIC GRADING EVENT**

**Late applications are considered individually, with higher fees, & MUST be paid by BANK TRANSFER.**

**Late GRADING Fees 11th JUNE to 20th JULY = £340.00 . From 21st JULY to 1st AUGUST = £440.00**

**Grading Fees for Horses Not Registered with BAPSH Ltd:- £345.00 up to 10<sup>th</sup> JUNE, or £465.00 from 11<sup>th</sup> June to 20th July**

If you have any queries then please email Mary McBryde, the BAPSH Ltd Registrar, at [bapshregistrar@btinternet.com](mailto:bapshregistrar@btinternet.com) giving details of the query and preferably a tel. number to call you back.

Please give a clearly identifiable SUBJECT in your email address box so that I can find it if you get Spammed !!

